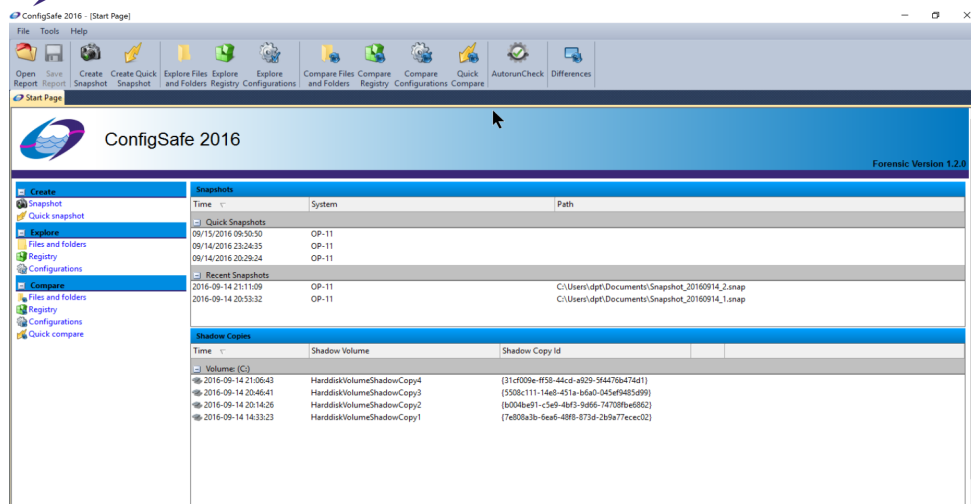




# ConfigSafe® 2016



## Track Key System State Changes in Windows

Monitor changes to the Registry, system files, DLLs, MBR, network settings, and drivers

## Intelligent System Restore

Enhance Windows System Restore functionality by using ConfigSafe export function to recover specific changes in the Registry and Files and Folders after a system restore

## Configuration Compliance

Identify the specific changes causing problems by comparing live images to Shadow Copies, Snapshots, or Configuration templates

## Windows Diagnostics, QA Testing, Development Research

Powerful utility for research and discovery of different Windows configurations and application installation, execution, and uninstallation footprints

## Why System Stability and Security is Important

Security and stability are the most important factors in keeping a Windows PC functioning at a high level. Instability, performance loss, or compromised security are problems that stem from unwanted system state changes. System state changes are made by hardware and software installations, or inadvertently made by users, or worse, deliberately and maliciously made by malware intrusions.

A proven resource installed in 30 million PCs worldwide, ConfigSafe protects Windows PCs by tracking all changes made to key system state components such as the Registry, system files, DLLs, network settings, and system drivers. ConfigSafe 2016 allows for the capture, exploration, and comparison of system "snapshots" which record a PC's exact configuration. By comparing configuration snapshots, ConfigSafe 2016 can pinpoint the specific changes that caused performance or security problems.

## What's New in ConfigSafe 2016

Previous ConfigSafe users will find that ConfigSafe 2016 has transitioned from a proprietary system configuration format to open and versatile formats: Volume Shadow Copy, SQLite-based snapshots, and live images on disk or in memory. ConfigSafe 2016 now supports configuration exploration and comparison of Shadow Copies from local and remote protected drives, mounted images, cloned drives, and all saved configuration SQLite images. System configurations are no longer restricted to protected drives and can now be exchanged between PCs facilitating forensic investigations in cyber security.

## ConfigSafe Ensures a Stable and Secure PC

ConfigSafe 2016 provides an unprecedented collection of powerful features for system configuration comparison and recovery, forensics automation, and Windows diagnostics and application development research. ConfigSafe 2016 is an indispensable tool for power users, software developers, security administrators, and digital forensics experts.

# ConfigSafe® 2016 Feature Comparison

## Forensics Investigation

### Automation

Automate repetitive forensic investigation tasks to identify malware payload artifacts

## Out-of-the-box User Experience for Critical System State Changes

Quick comparison of System State changes between live image and last System State configuration or last successful boot

## Travel Back in Time

### Blindly

ConfigSafe delivers a complete comparison picture before completing a restore operation

## Last Line of Defense

Examine and approve the latest additions and changes

## AutorunCheck Snapshot

Autorun Setting snapshot tool included for analyzing and authenticating existing Windows Autorun Setting entries

Features	ConfigSafe Desktop Edition	ConfigSafe Pro Edition/USB Edition	ConfigSafe Forensic Edition
<b>Local Shadowed Volumes</b>	Live Shadow Copy	Live Shadow Copy	Live Shadow Copy
<b>Remote Shadowed Volumes</b>	Not Available	Live	Live Remote Shadows
<b>ConfigSafe Snapshots</b>	System States	System States Files/Folders Registry	System States Files/Folders Registry
<b>Registry Hives</b>	System Software User	System Software User Security SAM	System Software User Security SAM
<b>Cross-System Investigation</b>	System State Configurations	Snapshots	Snapshots Remote Shadows
<b>Licensing</b>	Per PC	Pro Edition: Per PC USB Edition: Per USB	Per PC

## ConfigSafe 2016 Available in Multiple Editions

- ConfigSafe 2016 Desktop Edition
- ConfigSafe 2016 Pro Edition
- ConfigSafe 2016 Forensic Edition
- ConfigSafe 2016 USB Edition

## Designed for Windows Operating Systems

- Windows Vista
- Windows 7
- Windows 8.1
- Windows 10
- Supporting both x86 and x64
- Windows 2008R2 (Forensic + USB Eds. only)
- Windows 2012R2 (Forensic + USB Eds. only)

## About imagine LAN, Inc.

Imagine LAN has been providing effective configuration management tools for nearly 20 years. Throughout that time it has helped individual users as well as corporations better manage their Windows based PCs. The ConfigSafe product line has successfully helped reduce the total cost of ownership and support costs for leading systems vendors, corporations and individual users. Order ConfigSafe 2016 today at [www.imaginelan.com](http://www.imaginelan.com) and begin reaping the benefits of a more secure and stable PC.



**imagine LAN** Inc.

76 Northeastern Blvd., Nashua, NH 03062 U.S.A.  
<http://www.imaginelan.com>  
 ConfigSafe® is a trademark of imagine LAN, Inc.